

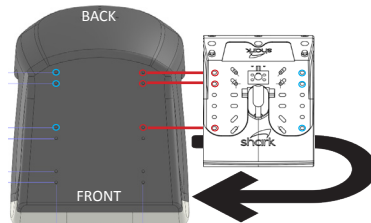
# HOW TO: Attach Shark EVO seat to **FLEX**



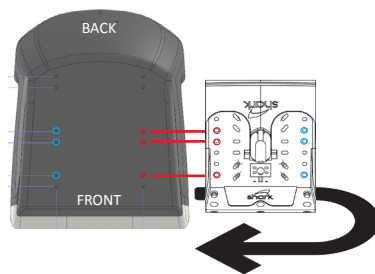
## Fitting diagram

The colored circles should line up

Regular orientation



Reflex orientation



## Shark P/N#:

EVO seat: FGXX0000-T

**FLEX** suspension: FXAXAA00

## HARDWARE SPECIFIC TO PROCESS:

- (6) NYLOC NUTS
- (6) M8 STAINLESS WASHERS
- (6) M8 x 30mm hex head bolts

## TOOLS REQUIRED:

13MM SOCKET WRENCH



Scan to follow along  
on YouTube



## A. Remove Bolts from seat

Remove the 6 M8 x 30mm hex head bolts with stainless washers that are finger tightened to the bottom of the seat. Place the seat on the ground with the threads at the base of the seat facing upwards. If possible, place an object under the seat surface so the threads are horizontal. If there isn't one accessible, lay the seat by the top of the back rest and the end of the seating area to form a triangle with the threads facing you.

## B. Line up and fasten

Bolting to the holes in the fitting diagram is recommended as the shock is centered. However, if you need to move the seat forwards or backwards to fit space requirements, you can fit to any available holes in the seat. Ensure there are at least 4 bolts fastened. When you have lined up your seat in regular or reflex orientation, place the M8x30mm hex head bolts with black washers into the holes you are fastening to finger tight. Then use a 13mm socket wrench to fully fasten the bolts. Be sure not to over tighten.