



SUSPENSION SEATS 2024



FLEX suspension range

FLEX provides 225mm of ultra-smooth travel that is completely corrosion-proof, light, and tough.

Combined with our stainless steel shock absorber, there are no pinch points or sharp edges and it will withstand 10g impacts making it safe in every way

FLEX



Transforms any seat for a softer safer ride

FLEX-pod

Super light and super compact

Only
3.3kg!



225mm

Picture shows **FLEX-pod** fully compressed

FLEX-pod brings 2/3rd of **FLEX** performance but in a package 1/3rd the weight and 1/2 the height.

That's 150mm of vertical travel in the smallest possible size to not only save your back but save space and money at the same time.

FLEX-HD



Rated for 10G vertically and 6G (crash) horizontally when used with seatbelts.

HIGH PERFORMANCE SUSPENSION

SEAT + SUSPENSION range

ULTRA



The starting point for every shark seat

NEW ULTRA-lite

Available with
EPIC cover



Weighs only 7kg and fits in even tighter spaces.

2024 EPIC

NEW: Rugged rear handgrip



French-stitched marine-grade leatherette in custom colours with rear hand grip

LUXE



The most complete seat that features all jockey accessories

SEAT + SUSPENSION range

SPECIFICATIONS

Model	shark ULTRA <small>(seat)</small>	shark EPIC <small>(seat)</small>	shark LUXE <small>(seat)</small>
Fabric	PU foam	Marine-grade leatherette	Marine-grade leatherette
Seat Weight	4.1kg	4.6kg	8.5kg
Seat Dimensions W x H x D (mm)	355 x 470 x 556	355 x 470 x 585	490 x 700 x 585
Shell Material	Flexanite	Flexanite	Flexanite



ULTRA-lite



ULTRA



EPIC



LUXE

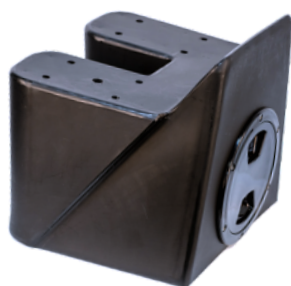
FLEX suspension specifications:

SPECIFICATIONS

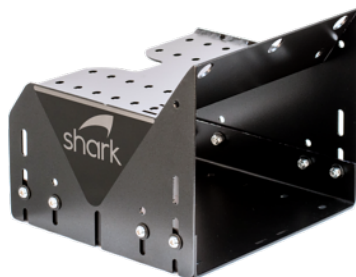
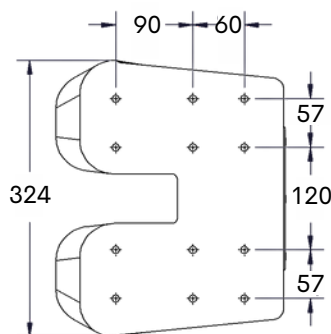
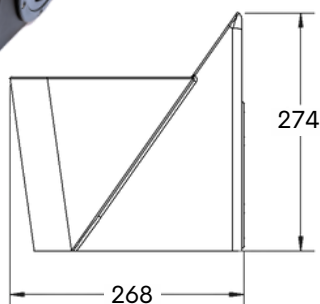
Model	shark FLEX -pod	shark FLEX	shark FLEX - HD
Material	316G Stainless & Flexanite™	316G Stainless & Flexanite™	316G Stainless & Flexanite™
Fastenings	M8 x 8, 316 SS	M8 x 8, 316 SS	M8 x 8, 316 SS
Weight	3kg	9kg	10kg
Base Dimensions W x H x D (mm)	260 x 220 x 435	300 x 450 x 350	300 x 450 x 350
Rated Weight Setting	40kg -100kg, self adjusting	40kg - 120kg, Self Adjusting	40kg - 140kg, Self Adjusting
Shock Mitigation System	Progressive 8G Rated Oil & Nitrogen Filled Shock	Progressive 10G Rated Oil & Nitrogen Filled Shock	Progressive 10G Rated Oil & Nitrogen Filled Shock
Shock Travel	150mm	225mm	225mm

HIGH PERFORMANCE SUSPENSION

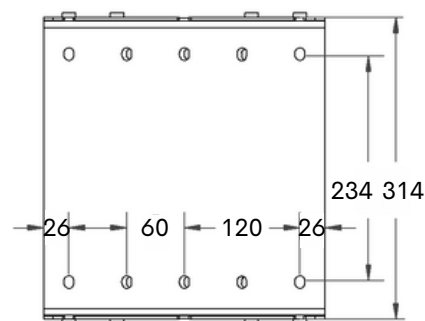
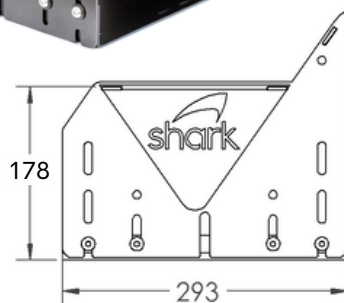
Fixed plinths



FIX(plastic)



FIX(alloy)



SPECIFICATIONS

Fastenings

M8 x 8, 316 SS

M8 x 8, 316 SS

Weight

2.8kg

3.4kg

Adjustable plinths

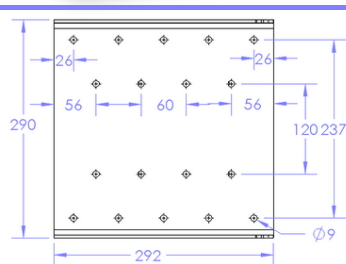
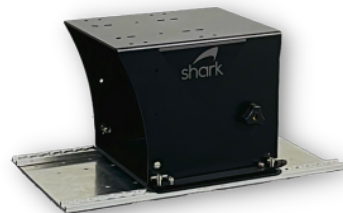
A1 (alloy)



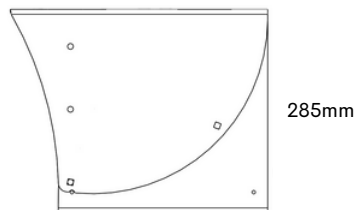
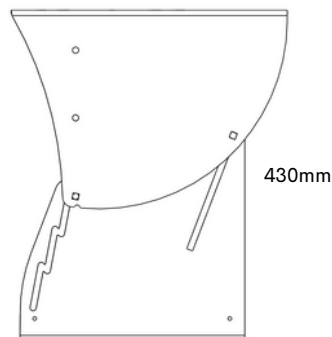
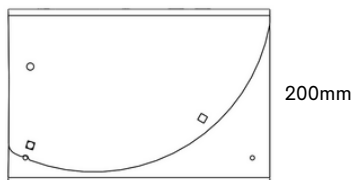
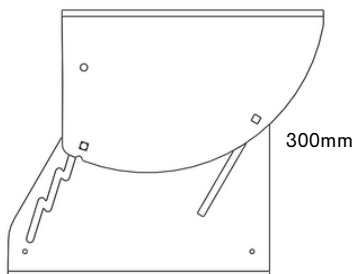
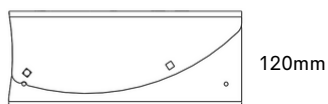
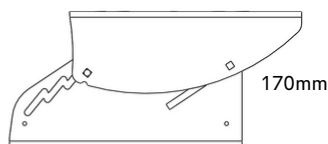
A2 (alloy)



A3 (alloy)



Bolt spacing is same across range



SPECIFICATIONS

Fastenings

M8 x 8, 316 SS

M8 x 8, 316 SS

M8 x 8, 316 SS

Weight

3.2kg

3.95kg

5.2kg

HIGH PERFORMANCE SUSPENSION

ULTRA-lite

ULTRA-lite

The most lightweight
suspension seat...

With **6" of travel** in a package which is
so compact it can fit in even the tightest
situation.

NOTE: **FLEX** and **FLEX**-pod
suspensions can be fitted facing in
either direction to suit your space
requirements and the type of motion
you prefer.

The top image shows "Reflex"
orientation which moves forward with
your body while "normal" orientation
shown below will move slightly
rearward during a slam.



**See me in
← action!**

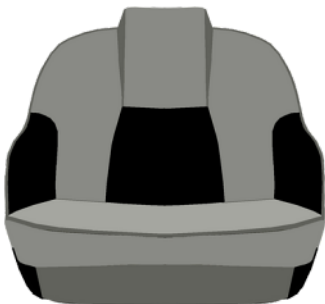
15cm (6") travel

M8 x 8, 316 SS

7kg

After market seats

For a range of other seat options consult your local shark dealer



Normal orientation



Reflex orientation



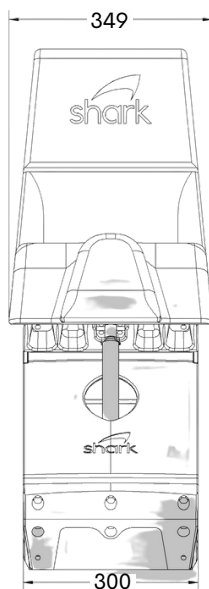
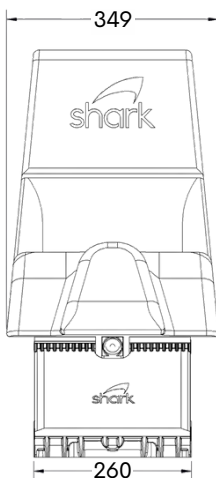
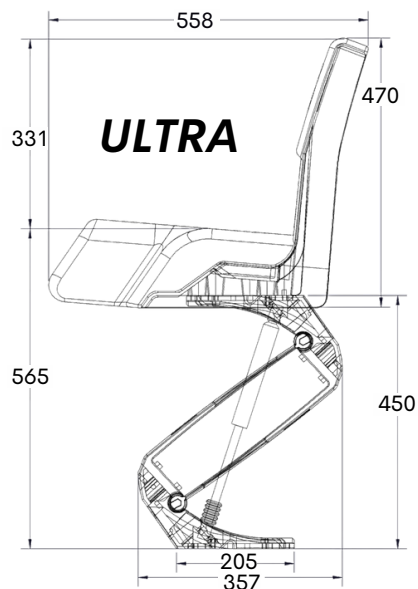
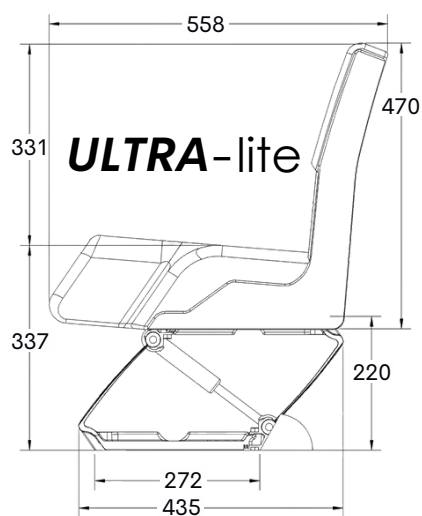
Normal



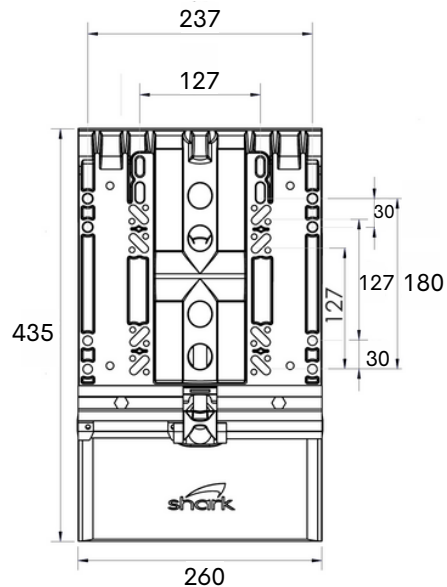
Reflex

HIGH PERFORMANCE SUSPENSION

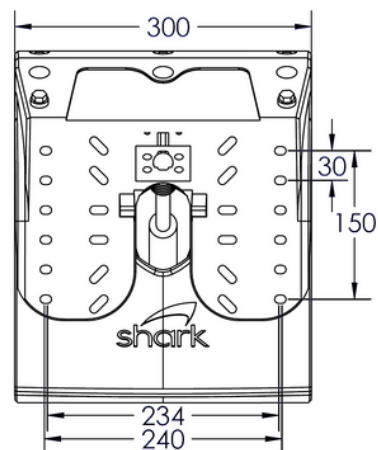
Drawings



FLEX-pod top (and bottom) view

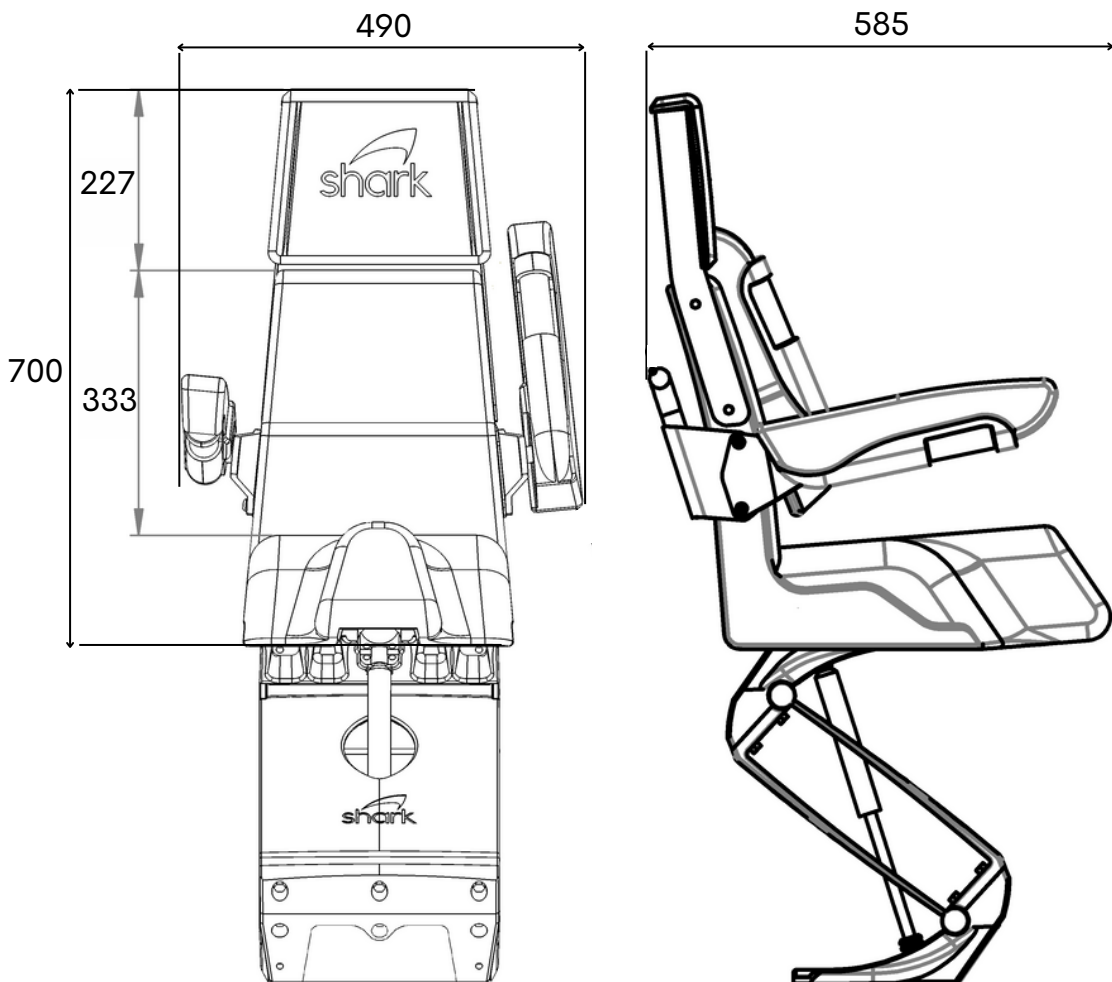


FLEX top (and bottom) view



Drawings

LUXE

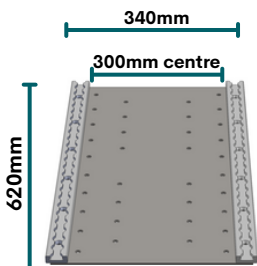


HIGH PERFORMANCE SUSPENSION

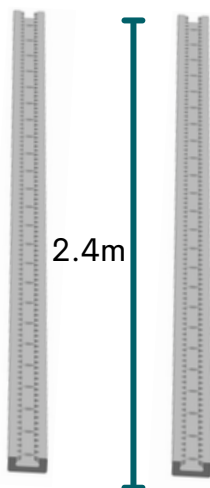
TRAX system

Floor plate + Rails + Adaptor = TRAX

Is a great retrofit as it covers all your old fixing holes and trim



For boat builders to arrange seats in rows



This plate allows you to quick mount your plinth, suspension or seat to shark TRAX



Allows any shark product to slide and quick-mount in any position



20mm added height

SPECIFICATIONS

Material

Alloy

Alloy

Alloy

Alloy

Weight

3kg

3kg

1.38kg

4.38kg

Accessories: For **FLEX** and **FLEX HD**

Front handgrip

Kit bag

Footrest



Front handgrip

Kit bag

Footrest

Material

Alloy

Nylon

316 SS

Weight

3kg

0.5kg

1kg

HIGH PERFORMANCE SUSPENSION

For **FLEX**-pod

For **ULTRA**

HD plates

Swivel & slide with
height adjust

Jockey seat covers

Adds extra lateral
rigidity for heavier use



Height adjustable from
375mm to 510mm



ULTRA



EPIC

HD Plates

Swivel slide

Seat covers

Alloy

Alloy

Nylon

Material

1kg

3kg

0.5kg

Weight

Accessories: For *ULTRA*, *EPIC* and *LUXE*

Jockey swivel

Allows for 360 rotation at 90 degree increments with front pull



TILT

Allows for any shark product to be tilted forwards or backwards



	Swivel	Tilt
Material	Alloy	Alloy
Weight	1.5kg	2.1kg

HIGH PERFORMANCE SUSPENSION

For **ULTRA**, **EPIC** and **LUXE**

Lap belt

Stainless steel aircraft style lap belt



4 point harness



Side grips

Additional stability for passengers behind these seats



Basket ^{NEW}

Allows for easy access storage behind the seat



Lap belt

Harness

Side grips

Basket

316 SS

N/A

Injection moulded plastic

Waterproof fabric

Material

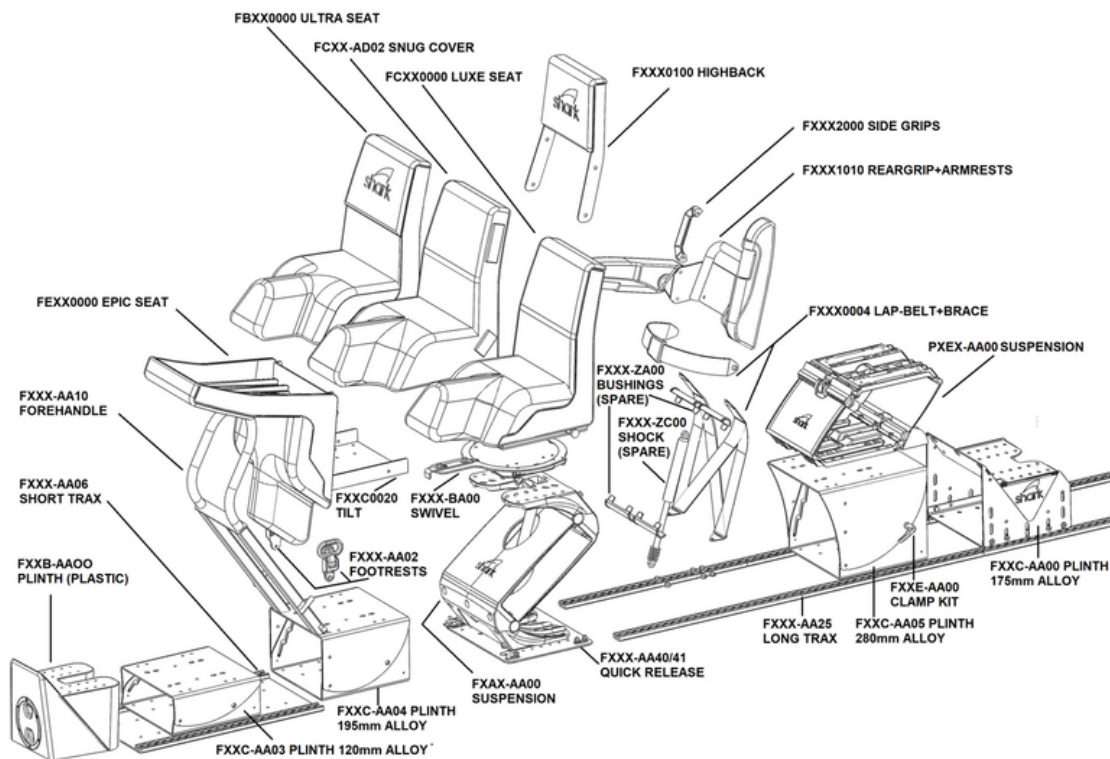
330g

2kg

135g

220g

Weight



Modularity