

INTRODUCING... shark Flex SHOCK-MITIGATION SYSTEM

Take one look at the Shark suspension and you see it right away... Only one moving part (the shock absorber) mounted to two rugged but elegant injection-molded leaf-springs with a massive 200mm of vertical movement without any of the sharp edges or pinch points that are found on other suspensions. There is also nothing to rust, no coatings to peel, just hi-tech UV-protected Flexanite with colour that is all the way through

The unique "Flex" design absorbs impacts in all three axes ... handy, because waves don't just pitch straight up and down! Flexanite composite plastic makes the Shark Flex system VERY light, yet robust, with minimal maintenance needed.

The same approach applies to the Shark Jockey seats which have a tiny footprint and weigh only 3kg, but which cater for all sizes of passenger and allows both sitting and standing without needing to readjust the seat.

Shark Flex has been tested to withstand over one million 10G impacts of more than 100ms duration at 120kg payloads (100kg on the seat and 20kg on the deck) and the entire system complies to test protocols defined by the UK and US military.

Despite this ruggedness, Shark provides a supple ride - the softest available, like "riding on a big marshmallow!"

Flex is part of a complete system including a range of seating and elevating plinths to suit any marine application...

Shark - Plinths



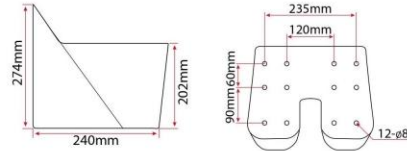
Storage compartment in plinth



www.sharkseating.com

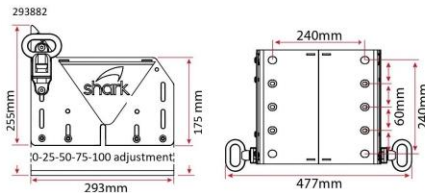
Description	Overall Dimensions L x W x H (mm)
Shark Plinth	293 x 325 x 274

Single mould for added strength
Storage compartment.
12ltrs of storage.



Description	Overall Dimensions L x W x H (mm)
Shark Adjustable Alloy Plinth	312 x 354 x 255

5 adjustable heights, as shown below or up 25mm, 50mm, 75mm and 100mm
Foot rest pegs can be folded upwards when not in use.
Front plate can be removed and be made into a storage compartment for various items.



ULTRA SMOOTH - "when you're serious about saving your back"

Suspension Base - Shark Flex

Description	Weight Rating (kg)	Shock Travel (mm)	Dimensions W x H x D (mm)
Shark Flex	40 - 120	200	300 x 450 x 350
Shark Flex-One	40 - 100	175	300 x 400 x 350

- Ideal for making your ride softer.
- The Flex suspension unit is simple with only one moving part. The original, more compact "Flex-one" is also available.
- Self adjusts for passengers from 40kg to 120kg.
- Exclusive stainless steel shock absorber.
- Three-axis shock mitigation for reduced whiplash from lateral and fore-aft forces.
- Small foot print.
- Non-corroding 316G stainless and Flexanite.
- Low maintenance.
- Tested 1 million full 10G impacts (200mm displacement, 100ms duration at 100kg payload).
- Light weight and easy to install.
- Complies with HSC 2000 Annex 10.
- 3 years warranty.



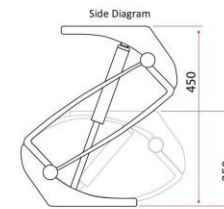
Specification	
Model	Shark Flex
Material	316G Stainless & Flexanite
Fastenings	316G Stainless Steel
Weight	9kg
Dimensions W x H x D (mm)	300 x 450 x 350
Rated Weight Setting	40kg - 120kg, Self Adjusting
Shock Mitigation System	Progressive 10G Rated Oil & Nitrogen Filled Shock
Shock Travel	200mm
Mounting Holes	8 x Ø8mm



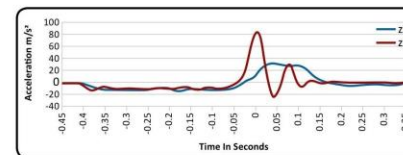
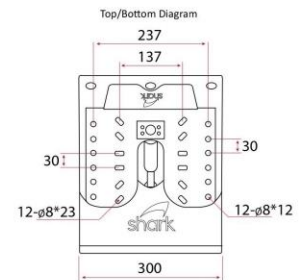
Multiple mounting hole patterns allowing the base to be mounted anywhere



Flex suspension embodies 3 unique parts with 3 axis shock mitigation protecting against injury and whiplash



this unique design provides a unit which compresses to half it's normal height and carries more than 10 times its own weight



In the graph shown (z1), the 70kg payload would experience a shock of 10 times its weight (or 700kg) for a tenth of a second, In the second test (z2) you can see the Shark Flex significantly reducing that impacts well as slowing the impact which allows a person's body to respond to it.

www.sharkseating.com